



ACCULOSS® 2500A HIGH-VOLTAGE DIVIDER



Featuring

- ▶ 120 to 960 kV AC
- ▶ Outputs of 120 V AC
- ▶ Primary Standard HV Measurements
- ▶ Loss Measurement Systems
- ▶ IEEE-488 Interface
- ▶ Division Accuracy < 20 Parts in 10⁶
- ▶ Calibration Period 3 to 5 Years

Overview

The models 2500A, 2501A, 2502A and 2503A complete the low-voltage arm of a high-voltage capacitive divider. Based on the compensated-current-comparator, it provides ultra-precise ratio division of high AC voltages down to measurable levels. The output of the divider can be read by a long-scale DMM or AC/DC transfer device

to precisely determine the input voltage. It can also be read by a precision power analyzer such as the MI model 2020A for direct measurements of the transformer or reactor losses under control of the IEEE-488 interface. Each divider comes equipped with 7 voltage ranges of 1, 2, 5, 10, 20, 50 and 100.

Feature	Benefit
Current comparator-based design.	Very high voltage division accuracy. Outstanding linearity over the full operation range.
Front panel or IEEE control.	Automated or stand-alone operation.
Feedback loop circuit with Reference Capacitor.	Keeps control of the accuracy over long period of time and/or temperature change.
Seven voltage division range.	Eliminates the need to use multiple standard PTs.
Front panel indicators.	For visual monitoring of measurement and operation.
Auxiliary scaled and not scaled outputs.	Auxiliary outputs can be used for automation and control without affecting or loading main output signal.



ACCULOSS® 2500A HIGH-VOLTAGE DIVIDER

Model 2500A: The input current to the model 2500A is given by applying a high-voltage to a low-loss high-voltage capacitor (100 pF/120 kV for 120 kV, 50 pF/250 kV for 240 kV) on its input. Several gain stages of 1, 2, 5, 10, 20, 50 and 100 are built in to allow flexibility for various input voltages. On gain 1, the full-scale input is 120 kV; while gain 100 offers a full-scale input of 1.2 kV. The full-scale output is 120 V for 120 kV input with a 10 % overrange. For a 100 pF, 100 kV input capacitor the full-scale output is 100 V.

To apply 240 kV to the same divider, a 50 pF, 250 kV standard capacitor is used on the input. On gain 1, the full-scale input is 240 kV, while gain 100 offers a full-scale input of 2.4 kV. The full-scale output is 120 V for 240 kV in with a 10 % overrange. For a 50 pF, 200 kV input capacitor the full-scale output is 100 V.

Model 2501A: The model 2501A will accept inputs up to 2.4 kV using a 1,000 pF, 2.4 kV or higher standard capacitor on its input. On gain 1 the full-scale input is 2.4 kV; while gain 100 offers a full-scale input of 120 V. The full-scale output for each range is 120 V.

Model 2502A: The model 2502A will accept inputs up to 480 kV when a 100 pF standard capacitor is used, and 960 kV when a 50 pF standard capacitor is used on the input. Several gain stages of 1, 2, 5, 10, 20, 50 and 100 are built in to allow flexibility for various input voltages. On gain 1, the full-scale input is 480 kV while gain 100 offers a full-scale input of 4.8 kV. The full-scale output is 120 V for all ranges. For an input capacitor of 50 pF, the full-scale input is 960 kV. On gain 1 the full-scale input is 960 kV while gain 100 offers a full-scale input of 9.6 kV.

Model 2503A: The model 2503A will accept inputs up to 360 kV when a 50 pF, 400 kV standard capacitor is used on its input. Several gain stages of 1, 2, 5, 10, 20, 50 and 100 are built in to allow flexibility for various input voltages. On gain 1 the full-scale input is 360 kV, while gain 100 offers a full-scale input of 3.6 kV with 10 % overrange. The full-scale output is 120 V for all ranges. For an input capacitor of 100 pF, 300 kV the full-scale input is 300 kV. On gain 1 the full-scale input is 300 kV while gain 100 offers a full-scale input of 3.0 kV with a full-scale output of 100 V.

A 1,000 pF low-loss stand capacitor is supplied with each unit as the reference capacitor. An optional high-voltage capacitor ranging from 2 kV to 800 kV can be

ordered to be used on the input of the divider.

Operating Principle: A simplified schematic of the current comparator based voltage divider is shown in Figure 1. The current in the low-loss high-voltage capacitor (C_H) is compared, using the current comparator, with the current obtained by applying the output voltage V_L to a stable low-loss standard capacitor (C_L).

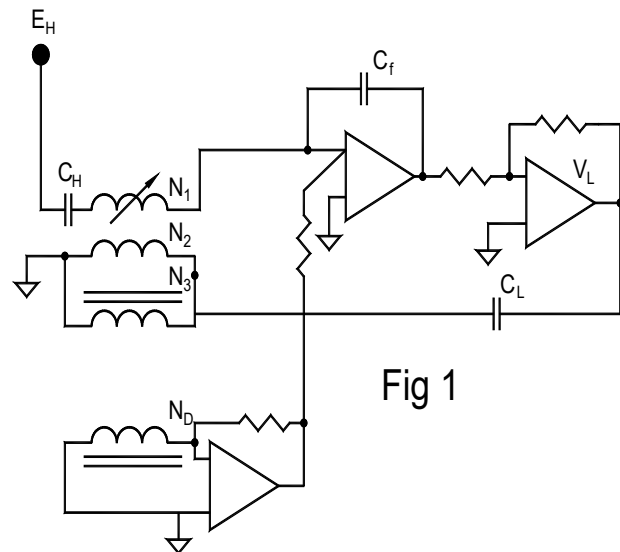


Fig 1

The main advantage of the 2500A is that the N_D winding in the current comparator automatically corrects for any magnitude or dissipation errors in the divider by adding the current in the detection winding through the feedback circuit to the current in the solid dielectric capacitor C_f resulting in a highly accurate and self-balancing voltage at V_L . There are no adjustments required, accuracy can be maintained for years.

Applications

1. Reactor Loss Measurement Systems
2. Transformer Loss Measurement Systems
3. AC High-Voltage Measurement Systems
4. Power Calibration Systems
5. Calibration of Standard Voltage Transformers
6. Calibration of Standard AC Resistive Dividers

The 250XA High-Voltage Divider series gives users unprecedented flexibility when it comes to accurate scale-down of AC high-voltage. One instrument can be used in combination with input capacitors of different nominal



ACCULOSS® 2500A HIGH-VOLTAGE DIVIDER

values expanding the division capability even more than just the seven built-in ranges. For example, the 2500A model when used with a 100 pF input capacitor can be used up to 100 kV. However, the same instrument with a 50 pF input capacitor can double the range and be used up to 200 kV. The table below shows other models' capability with different HV input capacitor.

The high-voltage divider can be used as a stand-alone unit or in combination with other instruments for a large variety of applications. It can be used with wattmeters for

accurate power measurements like Loss Measurement Systems, Power Calibration Systems and more.

It can also be used with AC Ratio Bridges and AC Capacitance bridges for calibrating Precision Voltage Transformers or any other AC voltage divider.

The current comparator technology design allows the instrument to be used also with AC Standard Resistors connected to its input or as a current to voltage precision converter. For more details about this or any other application, please contact your MI representative.

How to Order

Model	HV Capacitor Compatibility
Model: 2500A – High-Voltage Divider	Model CG 100 – 100 (100 pF, 100 kV)
Model: 2500A – High-Voltage Divider	Model CG 200 – 50 (50 pF, 200 kV)
Model: 2501A – High-Voltage Divider	Model CS 2 – 1000 (1000 pF, 2 kV)
Model: 2502A – High-Voltage Divider	Model CG 600 – 100 (100 pF, 600 kV)
Model: 2502A – High-Voltage Divider	Model CG 800 – 50 (50 pF, 800 kV)
Model: 2503A – High-Voltage Divider	Model CG 300 – 50 (50 pF, 300 kV)

Other values are available for shipping weight of HV capacitors, contact factory



ACCULOSS® 2500A HIGH-VOLTAGE DIVIDER

Specifications: Rev 7

	High-Voltage Divider Models and High-Voltage Capacitor Variants*					
	2501A-2.4 kV	2500A-100 kV	2500A-200 kV	2503A-300 kV	2502A-500 kV	2502A-1 MV
Voltage Ranges	120 V					
	240 V					
	360 V					
	480 V					
	600 V					
		1 kV				
	1.2 kV					
		2 kV	2 kV			
	2.4 kV					
				3 kV		
		5 kV	4 kV		4.8 kV	
				6 kV		
		10 kV	10 kV		9.6 kV	9.6 kV
				15 kV		
		20 kV	20 kV		24 kV	24 kV
				30 kV		
		50 kV	40 kV		48 kV	48 kV
				60 kV		
		100 kV	100 kV		96 kV	96 kV
				150 kV		
		200 kV				
				240 kV	240 kV	
			300 kV			
				480 kV	480 kV	
					960 kV	
HV Input Capacitor	Upon Request 1000 pF, 2.4 kV	CG 10 100 pF, 100 kV	CG 20 50 pF, 200 kV	CG 30 50 pF, 300 kV	CG 50 100 pF, 500 kV	Upon Request 50 pF, 1 MV

* Other dividers are available on request



ACCULOSS® 2500A HIGH-VOLTAGE DIVIDER

Specifications: Rev 7

2500A

Input Capacitor 100 pF	Input Voltage: 120, 60, 24, 12, 6, 2.4, 1.2 kV
	Output Voltage: 120 V
Input Capacitor 50 pF	Input Voltage: 240, 120, 48, 24, 12, 4.8, 2.4 kV
	Output Voltage: 120 V

2501A

Input Capacitor 1000 pF	Input Voltage: 2400, 1200, 600, 480, 360, 240, 120 V
	Output Voltage: 120 V

2502A

Input Capacitor 100 pF	Input Voltage: 480, 240, 96, 48, 19.2, 9.6, 4.8 kV
	Output Voltage: 120 V
Input Capacitor 50 pF	Input Voltage: 960, 480, 192, 96, 38.4, 19.2, 9.6 kV
	Output Voltage: 120 V

2503A

Input Capacitor 50 pF	Input Voltage: 300, 150, 60, 30, 15, 6, 3 kV
	Output Voltage: 100 V

* Note: The input capacitor must be able to withstand the maximum applied voltage. Other input and output voltages are available, consult factory.

General

Maximum Output Voltage	120 VAC RMS with 10 % Overrange
Division Ratio Uncertainty	Magnitude < 20 ppm Quadrature < 20 ppm
Frequency Range of Measured Values	40 Hz to 400 Hz
Gain Selection	7 Gain Setting of 1, 2, 5, 10, 20, 50, 100
Warm-Up Time	< 5 Minutes to Full Rated Accuracy
Operating Environment	10 to 34 °C, 10 to 18 % RH
Warranty	1 Year Parts & Labour

Dimensions (W × D × H):
221 × 482 × 584 (mm)

Weight:
18 kg

Shipping Weight:
22 kg

Main Power:
100/120/220/240 V – 50/60 Hz

Corporate Headquarters
Measurements International
PO Box 2359, 118 Commerce Drive
Prescott, Ontario, Canada K0E 1T0

Phone: 613-925-5934
Fax: 613-925-1195
Email: sales@mintl.com
Toll Free: 1-800-324-4988

Worldwide Offices
MI-USA
Phone: 407-706-0328
Email: sales@mintl.com

MI-China
Phone: +(86) 10-64459890
Email: sales@mintl.com

MI-Europe
Phone: +(420) 731-440-663
Email: sales@mintl.com

MI-Japan
Phone: +(81) 72 39 64 660
Email: kaz@mijpn.com

MI-India
Phone: +(91) 98 10 134 932
Email: sales@MILLP.co.in

